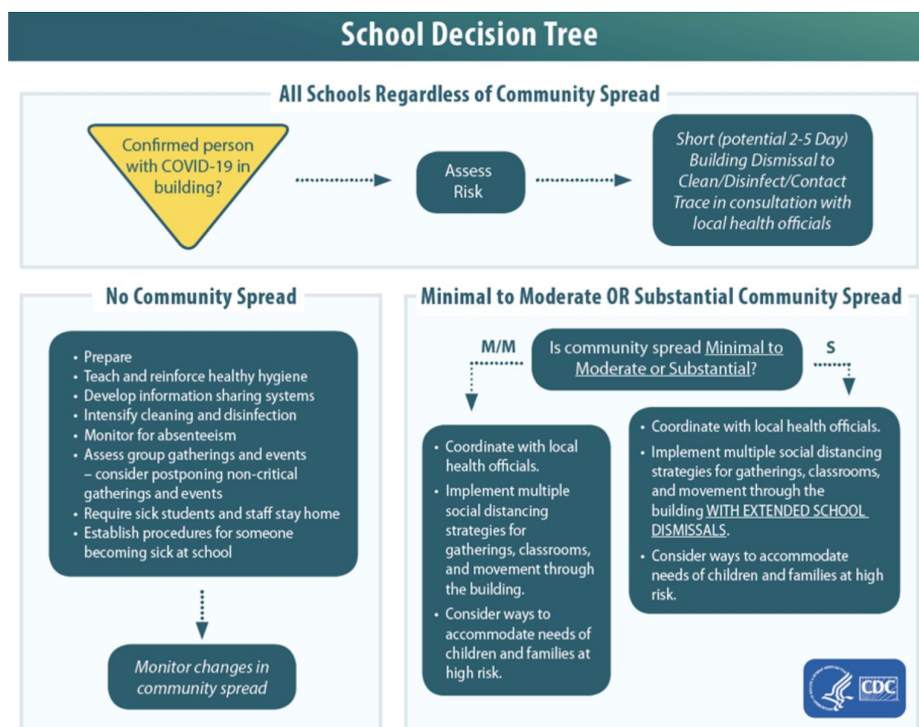


# MAKING A DIFFERENCE DURING COVID-19

Schools, working together with local health departments, have an important role in slowing the spread of diseases to help ensure students have safe and healthy learning environments. Schools serve students, staff, and visitors from throughout the community. All of these people may have close contact in the school setting, often sharing spaces, equipment, and supplies. Schools should have a plan/prepare/ prevent checklist.



In the new normal schools will be following a new set of processes to ensure the safety of staff and students. PikMyKid has created a quick reference checklist on the processes to follow for

your back to school and the tools that can help you track these actions. PikMyKid is COVID-19 ready platform tracking health check-ins, limiting nonessential visitors, enabling social distancing and alerting health officials for urban and rural schools, childcare and enrichment centers

Figure1 Source: Center for Disease Control Website

## Plan: Implement strategies to continue education and related supports for students.

Ensure continuity of education	Using PikMyKid you can check in the virtual classroom and physical classroom attendance
Ensure continuity of meal programs	When schools are not in session, use the PMK meals line to deliver meals to the students by changing the student's pickup to meals-pick-up dismissal group
Consider alternatives for providing essential medical and social services for students.	Use the program check in to track nurse visits, temperature checks, additional services for students at risk, and more

## Preparedness phase: When there is no community transmission

Review, update and implement emergency operations plans (EOPs).	An important checklist, ensure the link to the emergency plan is shared with parents through messenger. Special COVID-19 expectations and guidelines should be created.
Ability to report Day-to-day changes in absenteeism and disease surveillance efforts to detect and respond to an outbreak	Use PMK reports for morning health check-ins to report the kids reported sick every day/ every week
Teach and reinforce healthy hygiene practices.	School staff back to work health-check can be tracked on PMK program
Intensify cleaning and disinfection efforts.	Daily check-ins for School classrooms, lunchroom cleaning/disinfection can be tracked and reported via PikMyKid
Monitor and plan for absenteeism	Parents use their app to mark their students absent and all reasons can be captured/ customized. The absentee report will show the absentees due to sickness and schools can choose a course of action even before starting the session for the day
Assess group gatherings and events. Consider postponing non-critical gatherings and events	Each program can be managed independently and engage parents to communicate the postponing or cancellations
Establish procedures for students and staff who are sick at school.	Staff at the drop off point can use Morning checkin for staff and students. This will help quarantine the sick from the healthy students and alert the nurse if required.
Create and test communications plans	PMK messenger will help communication via an app and email

for use with the school community	to all parents next steps and link the school communications page with updates
-----------------------------------	--

## Prevent: When there is minimal to moderate community transmission

Coordinate with local health officials	Find your local health officials and include them to the medical emergency alert contact list
Cancel field trips, assemblies, and other large gatherings	Any last-minute changes can be shared through Parent messenger
Cancel or modify classes where students are likely to be in very close contact.	Instantly alert the parents of any classroom, bus route or vans on cancellation due to close contact with COVID-19.
Increase the space between desks.	Back to school planning should include keeping desks separated & if possible limit class sizes further.
Avoid mixing students in common areas.	Stagger lunch & recess by class or grade, send a few students into the library to pick out books rather than going as a class, suspend the use of lockers. Restrict hallway use through homeroom stays, the staggered release of classes, or one-way hallways
Stagger arrival and/or dismissal times.	Use PikMyKid dismissal times to adjust the staggered dismissal times and limit cars on campus in the mornings & afternoons.
Reduce congestion in the health office.	Using PikMyKid medical emergency alerts can be in active contact with the health office and use the space for children with flu-like symptoms and a satellite location for first aid or medication distribution.
Limit nonessential visitors	Use parent arrival announcements in PikMyKid to track pickup on campus and check-in only approved guardians/people.
Limit cross-school transfer for special programs	Limit transfer with parent alerts, consider using distance learning to deliver the instruction or temporarily offering duplicate programs in the participating schools.
Teach staff, students, and their families to maintain distance from each other in the school.	Use PMK to communicate procedures and recommendations for families to review with their children.

## Prevent the Spread: When a confirmed case has entered a school, regardless of community transmission

Coordinate with local health officials	Using PikMyKid Emergency alert to notify the school staff and local health officials
Dismiss students and most staff for site disinfecting.	Using PMK Messenger, send notification on early dismissal to parents and release students for the day. Notify parents about bus departures as soon the routes leave the campus
Communicate with staff, parents, and students	Consistent messages should be hosted on school or district page and use PMK messenger to share these links
Clean and disinfect thoroughly	Maintain a daily cleaning checklist on PMK and check the daily status or the emergency cleanup status.
Make decisions about staggering the school dismissal.	Schools should follow the county and district guidelines for closures. In case of emergency closure of a specific classroom, schools communicate to parents and alert health officials. Explore a varied school day with student groups attending alternate days to reduce people on campus.

### Staff Health Check:

- Pre-Screen: Employers should measure the employee’s temperature and assess symptoms prior to them starting work on site. Ideally, temperature checks should happen before the individual enters the facility.
- Regular Monitoring: As long as the employee doesn’t have a temperature or symptoms, they should self-monitor under the supervision of their employer’s health program.
- Wear a Mask: The employee should wear a face mask at all times while in the workplace for 14 days after the last exposure. Employers can issue facemasks or can approve employees’ supplied cloth face coverings in the event of shortages.
- Social Distance: The employees should maintain 6 feet and practice social distancing as work duties permit in the workplace.
- Disinfect and Clean workspaces: Clean and disinfect all areas such as offices, bathrooms, common areas, and shared electronic equipment routinely.